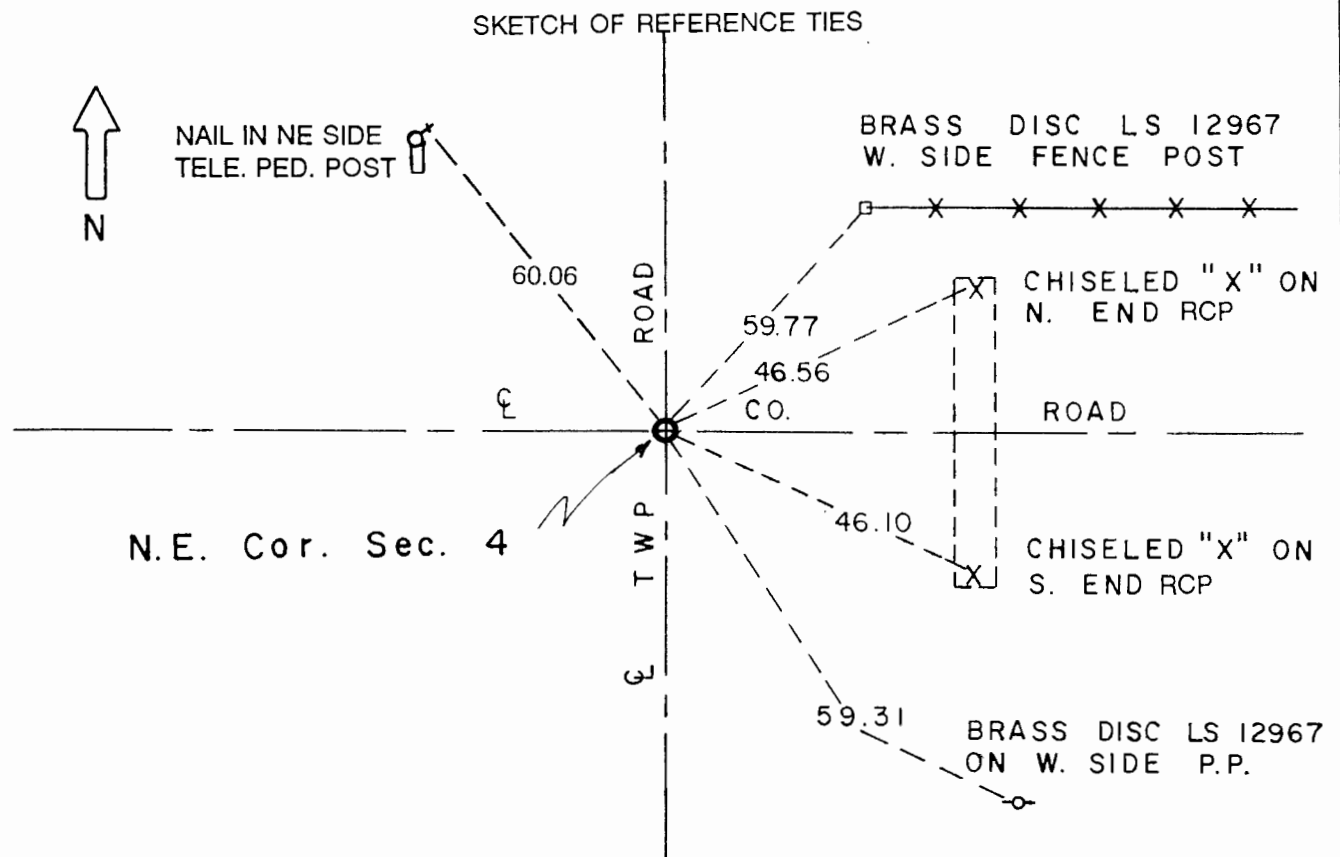


CERTIFICATE OF LOCATION OF GOVERNMENT CORNER

Northeast Corner of Section **4** , Township **107** , Range **41** 5th P.M.

STATE OF MINNESOTA, County of Murray.

Statement: May 31, 1989 - Found a capped iron pin and two field stones. Lowered the monument and placed a Mn/DOT Cast Iron Monument.



Statement of evidence relative to this corner location is on the back of page.

I hereby certify that this document and the data contained herein was prepared by me or under my direct supervision and that I am a duly Registered Land Surveyor under the laws of the State of Minnesota.

Duane A. Bonreema 2-25-91
 Duane A. Bonreema Date

Minnesota Registration No. 14895

OFFICE OF THE COUNTY RECORDER
 COUNTY OF MURRAY **MAR 1 1 1991**

I hereby certify that this document was filed in the County Recorder's office at ___ M. on the ___ day of ___ A.D., 19__

County Recorder *James V. Johnson*
 By _____, Deputy
 DOCUMENT NO. _____

Northeast Cor. Sec. 4 T107N-R41W

Statement:

- July 1861* *Original Government Land Office Surveyor J. W. Myers records in his field notes, "Drove charred stake, made mound of earth and sod with trench pits as per instructions."*
- Date Unknown* *The Murray County Highway Engineer's Records show that they found a stone and Iron pin 8" long placed 4" below the surface.*
- July 24, 1987* *The Murray County Highway Engineer's Records show that they found a Martin LS, yellow capped pin. Pin above stone. They note several witness ties to the Corner. They also note that the pin was removed accidentally and was not replaced at this time.*
- May 31, 1989* *Duane A. Bonnema, LS Reg. No. 14895, found the "Martin LS" yellow capped pin at the road surface. A 5" x 8" x 12" field stone was found 2 feet below the road surface with its pointed end up. Original topsoil is 2.3 feet below the road surface. A 6" x 8" x 11" green colored stone was found 3.2 feet below the road surface. Dug to a depth of 4.2 feet where clay was encountered below the original topsoil. A Minnesota Department of Transportation Cast Iron Monument was placed near the surface of the road.*